

District Dribble

The Newsletter of the Northern District Hockey Association

May 2008

Presidents Piece

Welcome to another season of hockey. It's great to see many familiar faces at the grounds along with some new ones. The season has kicked off in great style with many of our juniors and seniors representing the club proudly.

The 2008 season looks like being our biggest ever with player numbers and this is as a result of the dedicated hard work of many people. I would also like to take this opportunity to thank our club sponsors *Just Hockey*, *Pennant Hills Bowling Club* and *Paul Taylor Physiotherapy* for their support of our club.

Here are some things to watch out for in 2008:

~ Team match reports on the website. These are great to read and catch up on other team's progress.

~ The installation of our new electronic scoreboard very soon.


~ Strikers Men's Premier grade games at PHP. Keep an eye out on the website.

Also, I wanted to wish the best of luck to all our representatives who will be competing in upcoming state championships for both Primary School and HNSW Junior carnivals. Lastly, our umpiring ranks are steadily growing and we are having an increasing number of Juniors attending HNSW development camps. If you are interested in umpiring then give me a call on 94566870.

Best of luck for the season and please give me a call anytime if you have any concerns, questions or suggestions in the running of your club.

Larry Maher
President

Junior Teams for 2008

- 
- U11 Gold** Coach: Brian Doughty
Assist. Coach: Madi Clarke
Manager: Adrian Wilson
 - U11 Blue** Coach: Bruce Astbury
Assist. Coach: Malcolm Green
Manager: Ian Steward
 - U11 White** Coach: Brian Lawrence
Assist. Coach: Michael Clarke
Manager: Elicia Leitch
 - U13 Gold** Coach: Rohan Tudor
Manager: Kay Berriman
 - U131 Blue** Coach: Julie Osborne
Assist. Coach: Sarah Osborne
Manager: Lynne Emerton
 - U13 White** Coach: Kate Fitton
Assist. Coach: Aimee Fltton
Manager: Mercia Millington
 - U15 Metro** Coach: Chris Hawkins
Assist. Coach: Tim Watkins
Manager: Eileen Tudor
 - U15 Blue** Coach: Phill Burke
Manager: Marisa Levitt
- 

THANK YOU to all our Coaches, Assistant Coaches and Mangers!

Mouth Guards and Shin pads



You've paid to play so don't miss out on getting on the field because you forgot your mouth guard or shin pads.



Without them you will be a spectator. **THEY ALSO NEED TO BE WORN PROPERLY** – a mouth guard that is being chewed, popped in and out of the mouth or any other variation other than where it should be doesn't count! **Parents** – please remind your players.

Junior Convener

Welcome to all new players and their families and the existing players and families returning for the 2008 season. We continue to grow our club and again are fielding 8 teams in 2008 in the U11, U13 & U15 age groups, plus we already have 20+ new U9's running around Pennant Hills turf on Friday nights between 5:30-6:30pm. We have also increased the number of people involved with coaching and managing teams which lightens the load and gets more families involved with the club. We can always use assistance in other areas of the club so please let me know if you have ideas or can help out. We have already completed the first 3 rounds of the Nth Area competition with all teams going well & I look forward to each players & teams success and enjoyment during the year. The draw has been finalised for Rounds 4-8 and have been placed on the website, as soon as the rest of the year has been done it will be sent out and added to the club website. Please keep checking the website for information about the club, including results, draws and up coming events or news items.

Club Fundraising

Ever wondered how that \$30 fundraising levy gets spent? The club raises roughly \$3000 per year with this levy and some parents have rightly questioned how this gets disbursed. Well for a start, we have a raffle each year with a number of prizes. All the funds go directly to the ongoing cost of running our 14 teams across the juniors and women's side of the club. Over the last 2 seasons the club has spent in excess of \$10,000 on goalkeeping equipment, team match & training balls, fitness equipment, coaching manuals and playing shirts to name but a few of our costs. I would also like to point out that the club is very conscious of the cost to manage its affairs and that playing fee's have remained unchanged since 2002. Good luck in that raffle!

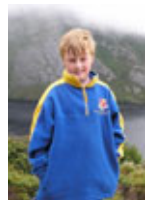


Executive Committee

President	Larry Maher	0439 968 701
Vice President	Graham Hutton	0419 268 628
Treasurer	Gary Prowse	0401 992 520
Secretary	Meredith Peterson	0412 040 056
Junior Convener	Eileen Tudor	0402 127 763
Equipment Officer	Rohan Tudor	0411 127 725
Umpiring Convener	Larry Maher	0439 968 701
Turf Convener	Pat McCabe	0407 911 124
Women's Convener	Julie Osborne	0405 542 022
Men's Veterans	Chris Jenkins	
Publicity Officer	Fiona Begg	9980 7027
Records Officer	Donna Collier	
Results Officer	Fiona Begg	9980 7027
Web Convener	Eileen Tudor	0402 127 763
North Area Delegate	Rohan Tudor	0411 127 725
North Area Delegate	Larry Maher	0439 968 701
Strikers Delegate	Anne Maher	
Committee Delegates	Keith & Kelly Rogers	John & Kay Berriman
	Anne Boyle	Jim Bissaker
	Belinda Fitton	Kerry Marshall
	Joe Dean	

Club Merchandise

Club caps, t-shirts, shorts, socks, beanies and fleecy jumpers are available from the canteen. Those Friday nights on the sideline can get cold – dress warmly and support your team!



On the Sideline...

Just a reminder to all parents that Umpires are volunteers and without them there would not be a game. The club will not tolerate parent's abuse of an umpire. Most of our Junior Umpires are still learning and even adults make mistakes. Also remember if a parent is caught abusing an Umpire the Captain of that team can be sent from the field for a period of time or the parent can be asked to leave the ground. No one would like to see either of these things happen.



Women's Report:

The women of Northern District continue to go from strength to strength. This year we have 68 women registered, making a record five women's teams. I would like to extend a welcome to all the women, but especially to the 29 new players. We hope you enjoy your time with us.

We also welcome some new coaches to the Northern Districts family. With Ambi Thind stepping down at the end of last year, Pappu (Harry) has stepped up to the challenge, with the hopes of upholding the high standard of which ND1 finished the 2007 season. After ND2 struggled to find a coach last year, Jag stepped in, but has sadly had to leave us also. We have gladly welcomed Graham Hutton into the position and are looking forward to learning from his vast experience. Daniel returns as the coach for ND3 with little change to the 2007 team, and are looking forward to building on last year's results. Currently ND4 do not have a coach and we continue to look for willing volunteers. With the average age of ND5 being 43yo, with their combined experience they will be too much for a coach to handle so have opted not to have one, however a first aid officer might be required. We have 15 U18's this year. I would like to welcome all the girls, and extend a special welcome to the 5 new players. The coaching role has been taken over by Keith Rogers a Northern District stalwart. The U18 competition is a great opportunity for the girls to experience all girl hockey and is a great preparation for joining the women's competition. I wish everyone good luck over the coming season.

ND women have a new team (code named the Flushes). This is a team of mature ladies with vast quantities of experience that have been motivated to play or continue playing this great game. Our oldest member is 49 and youngest is 39 with the average age 43). In our first 3 rounds we have had 1 loss, 1 win and a draw. We are looking forward to a rewarding and social year playing at our home ground every Sunday afternoon along with the other 4 ND Womens teams. Looking great for 2008.

Julie Osborne

Northern District Website

The Club website is www.ndhockey.com.au
It is updated regularly with Club information, team draws, results and match reports, contacts, links, uniform information and much more. Add it to your website "Favourites".



Premier League Games – Norwest Strikers

Come and cheer for our top team, the Norwest Strikers. Their next home games are:
Saturday May 10th at 8pm at Pennant Hills Park
Saturday May 17th 3.30pm at Pennant Hills Park
Saturday May 31st 6.30pm at Pennant Hills Park

To check game details go to www.sydneyhockey.com.au then Competitions – Mens – Premier League 1st Grade – Fixtures

Volunteers in 2009

2009 is shaping up to be a very busy and exciting year for Major International Events, in NSW.



January starts the year off with the Australian Youth Olympic Festival, followed by the Samsung Women's Champions Trophy in July and then the World Masters Games in October. A variety of positions are available including for eg: Athlete Services, Official Services, Venue Services, Field of Play, Administration, Drivers, Sports Information, Ball Persons, Media, VIP etc. Successful applicants will be allocated to positions that best suit their individual skills and interest. If you want to know how to get involved, you can get more information from the Northern District website.

Umpires Corner

Hi, and welcome to the first edition of Umpires Corner for 2008. Today I want to concentrate on the many confusing rule changes relating to Goalkeepers.



The 2007-08 Rules of Hockey now allow for 3 different levels of "protection", but for junior players only the highest level is permitted, that of fully kitted keeper. The only time a fully kitted keeper is allowed out of their 23m area is to TAKE a penalty stroke, and they must leave their helmet at their 23m.

The second level of protection is a field player who is wearing a different shirt to their team and opposition. This player has full goalkeeping privileges inside their circle; i.e. they may use any part of their bodies, arms, legs, etc, to play at the ball inside the circle. They must wear a helmet during penalty corners and penalty strokes, and must not leave their 23m area without removing the helmet. Without the helmet they may play as a normal field player anywhere on the field. (Confused yet?)

The third option is to have 11 field players and no goalie at all. In this instance, nobody has any goalkeeping privileges, and no use of the body or feet is permitted.

These 2nd and 3rd options are not permitted at a junior level.

- At penalty corners, an injured or suspended goalkeeper may only be replaced by a similarly equipped goalkeeper -so in this instance a goalkeeper wearing only protective headgear may not be replaced by a fully equipped goalkeeper
- At penalty strokes, the goalkeeper may still be replaced by a fully equipped goalkeeper -there has been no change to this rule.
- When a fully equipped goalkeeper is substituted onto or off the pitch, time must be stopped. The keeper may enter the field inside their quarter, or from the backline.
- If substitutions involve only goalkeepers wearing protective headgear or field players, the normal substitution rules apply and time is not stopped.

- Play should not be delayed while a goalkeeper not yet on the pitch changes into or puts on protective equipment
- A fully or partly equipped goalkeeper can be substituted onto or off the pitch near their goal
- In order to prevent the problems associated with a fully equipped goalkeeper stepping out of their goal and being replaced (by a goalkeeper wearing only protective headgear or a field player) at the centre-line, time should not be re-started until the substitution of the fully equipped goalkeeper has been completed
- Substitutions onto or off the pitch of field players who replace goalkeepers, should take place near the centre-line
- Goalkeepers are permitted to move the ball away with their hand / hand protector / arm / body, as part of a goal saving action
- This action is permitted in all situations where attackers have an opportunity to score or attempt to score a goal, so it can also be used to deny attackers the possibility of possession of the ball or another shot at goal
- There is no requirement that the ball is going towards the goal when using this action, so a goalkeeper may intercept a pass across the face of the goal or sweep the ball away from in front of an attacker's stick –there only needs to be the threat of an attacker being able to play the ball
- Goalkeepers therefore must not intentionally propel the ball over long distances with their hands. Goalkeepers who propel the ball forcefully in this way (when there is no chance of an opportunity for the attackers or after a pass from a team mate, for instance) should be penalised with a penalty corner
- The distance that the ball can be moved away is not specified, however common sense should be used in judging the distance the ball may travel from the goal saving actions as indicated in this rule. Be aware that the nature of the materials from which the protective goalkeeping equipment is made will have an influence on this. The permitted action is subject to the usual danger considerations.

Short Corner:

Why is hockey a messy sport?

Because the players keep dribbling on the field